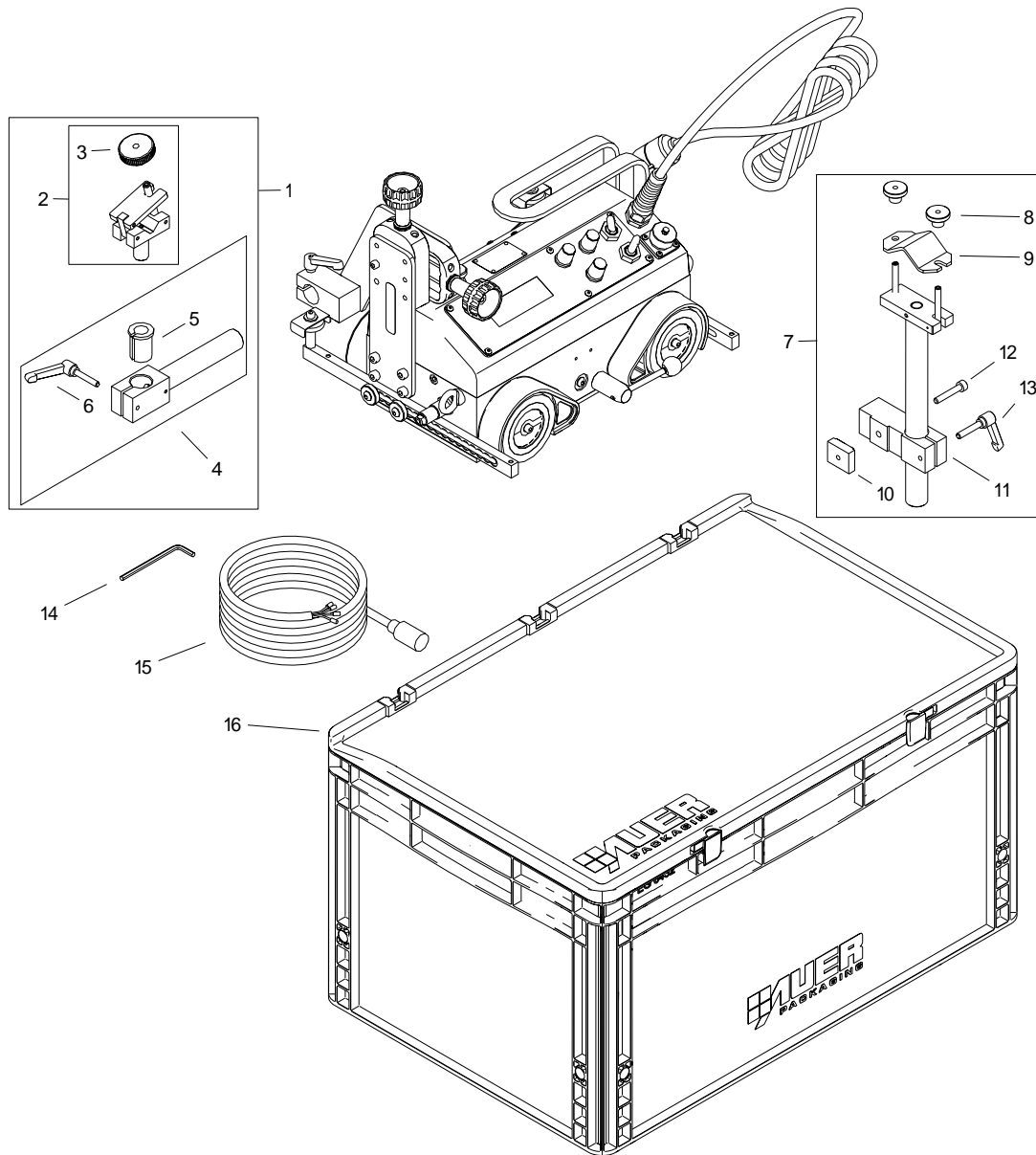


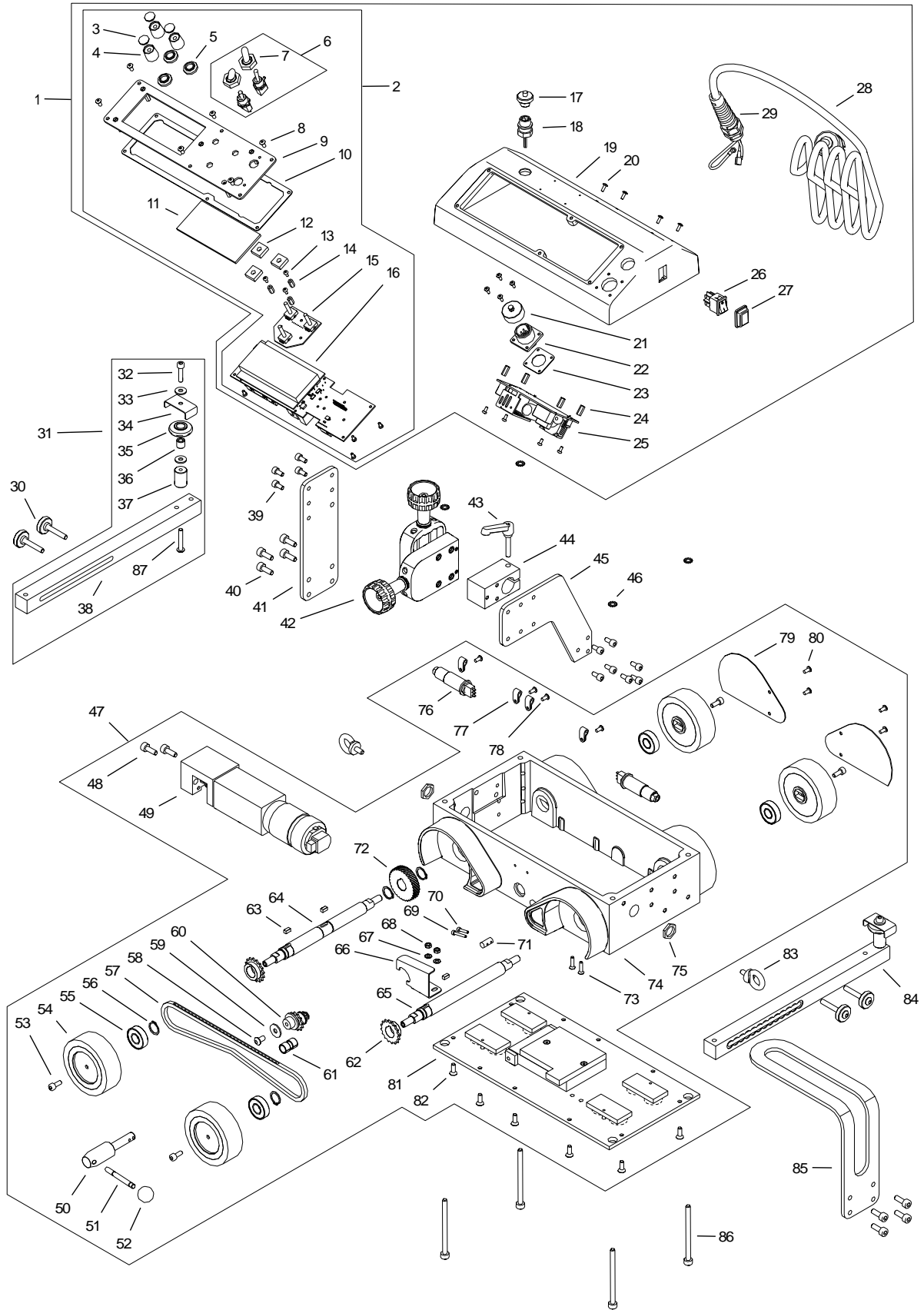
## **PARTS LIST**

### **LIZARD WELDING CARRIAGE**





| ITEM | PART NUMBER         | DESCRIPTION                                 | Q-TY |
|------|---------------------|---|------|
| 1    | UCW-0754-07-00-00-0 | SHORT ROD TORCH HOLDER ASSY                 | 1    |
| 2    | ZRZ-0752-07-01-00-0 | TORCH CLAMP                                 | 1    |
| 3    | PKT-0752-07-01-03-0 | CLAMP KNOB                                  | 1    |
| 4    | WLK-0476-20-01-00-0 | Short Rod Assy                              | 1    |
| 5    | TLJ-0419-04-02-03-0 | INSULATION TUBE                             | 1    |
| 6    | RKJ-000036          | HANDLEVER GN 300-45-M6-32-SW                | 1    |
| 7    | PDT-0754-12-00-00-0 | CABLE ANCHOR                                | 1    |
| 8    | NKR-000121          | KNURLED NUT M6                              | 2    |
| 9    | TRM-0219-06-16-00-0 | CLAMP PLATE                                 | 1    |
| 10   | NKR-0754-12-02-00-0 | ANCHOR NUT                                  | 1    |
| 11   | KST-0754-12-01-00-0 | ANCHOR BLOCK                                | 1    |
| 12   | SRB-000123          | HEX SOCKET HEAD CAP SCREW M6x35             | 1    |
| 13   | RKJ-000036          | HANDLEVER GN 300-45-M6-32-SW                | 1    |
| 14   | KLC-000007          | HEX WRENCH 4 MM                             | 1    |
| 15   | KBL-0466-17-00-00-0 | START-STOP ARC IGNITION CABLE 6.5 M (20 FT) | 1    |
| 16   | SKR-0754-99-00-00-0 | PLASTIC BOX ASSY                            | 1    |



| ITEM | PART NUMBER         | DESCRIPTION             | Q-TY |
|------|---------------------|-------------------------|------|
| 1    | PKR-0754-02-00-00-0 | CONTROLLER HOUSING ASSY | 1    |
| 2    | PNL-0754-02-02-00-0 | CONTROL PANEL ASSY      | 1    |
| 3    | PKR-000053          | CAP                     | 3    |

This document is protected by copyrights.

Copying, using, or distributing without permission of JEI Drilling & Cutting is prohibited.

| ITEM | PART NUMBER         | DESCRIPTION                                | Q-TY |
|------|---------------------|--|------|
| 4    | PKT-000040          | KNOB 16 FOR MANDREL 6 MM                   | 3    |
| 5    | OSL-000196          | KNOB COVER                                 | 3    |
| 6    | WZK-0476-02-02-02-0 | TRAVEL DIRECTION AND ARC IGNITION WIRE SET | 1    |
| 7    | OSL-000036          | LEVER SWITCH COVER                         | 2    |
| 8    | WKR-000091          | HEX SOCKET BUTTON HEAD SCREW M4x8          | 6    |
| 9    | MSK-0754-02-02-01-0 | PANEL PLATE ASSY                           | 1    |
| 10   | USZ-0722-02-02-03-0 | COVER PLATE SEAL                           | 1    |
| 11   | OSL-0722-02-02-02-0 | DISPLAY COVER                              | 1    |
| 12   | USZ-0722-02-02-01-0 | SEAL                                       | 3    |
| 13   | WKR-000428          | CROSS RECESSED PAN HEAD SCREW M3x6         | 15   |
| 14   | TLJ-000023          | SLEEVE M3x10                               | 3    |
| 15   | MDL-0722-80-02-00-0 | ENCODERS MODULE                            | 1    |
| 16   | MDL-0754-80-01-00-0 | CONTROLLER MODULE                          | 1    |
| 17   | ZLP-000025          | PLUG M12 SERIES713                         | 1    |
| 18   | WZK-0476-02-06-00-0 | OSCILLATION MODULE WIRE SET                | 1    |
| 19   | PKR-0754-02-01-00-0 | HOUSING                                    | 1    |
| 20   | WKR-000313          | HEX SOCKET BUTTON HEAD SCREW M3x8          | 8    |
| 21   | NKR-000149          | JAM NUT 14S                                | 1    |
| 22   | WZK-0476-02-04-00-0 | ARC IGNITION SOCKET WIRE SET               | 1    |
| 23   | KLR-000005          | SEALING FLANGE 14                          | 1    |
| 24   | TLJ-000146          | SLEEVE M3                                  | 4    |
| 25   | ZSL-000045          | SWITCHED POWER SUPPLY UNIT                 | 1    |
| 26   | PNK-000059          | POWER SWITCH                               | 1    |
| 27   | OSL-000219          | SWITCH COVER                               | 1    |
| 28   | PWD-0752-02-07-00-0 | POWER CORD 230V (UK)                       | 1    |
| 28   | PWD-0752-02-06-00-0 | POWER CORD 230V (INDIA)                    | 1    |
| 28   | PWD-0752-02-05-00-0 | POWER CORD 230V (AU)                       | 1    |
| 28   | PWD-0752-02-04-00-0 | POWER CORD 115V (US)                       | 1    |
| 28   | PWD-0752-02-03-00-0 | POWER CORD 230V (EU)                       | 1    |
| 29   | DLW-000007          | CABLE GLAND WITH STRAIN RELIEF PG11        | 1    |
| 30   | SRB-0476-08-00-00-0 | GUIDE ARM SCREW                            | 4    |
| 31   | PRW-0476-04-00-02-0 | GUIDE ASSY.                                | 1    |
| 32   | SRB-000177          | HEX SOCKET HEAD CAP SCREW M5x22            | 2    |
| 33   | PDK-000036          | ROUND WASHER 5.5                           | 4    |
| 34   | OSL-0466-06-02-00-0 | ROLLER COVER                               | 2    |
| 35   | RLK-0221-01-19-00-0 | ROLLER                                     | 2    |
| 36   | TLJ-0419-06-03-00-0 | ROLLER SLEEVE                              | 2    |
| 37   | TLJ-0476-04-02-00-0 | GUIDE ASSY. SLEEVE                         | 2    |
| 38   | RAM-0476-04-01-00-2 | GUIDE ARM                                  | 2    |
| 39   | SRB-000075          | HEX SOCKET HEAD CAP SCREW M5x10            | 11   |
| 40   | SRB-000106          | HEX SOCKET HEAD CAP SCREW M6x16            | 8    |
| 41   | WSP-0752-04-00-00-0 | GUIDE BRACKET                              | 1    |
| 42   | ZSP-0466-14-00-00-0 | CROSS SLIDE ASSY                           | 1    |
| 43   | RKJ-000036          | HANDLEVER GN 300-45-M6-32-SW               | 1    |
| 44   | KST-0752-06-00-00-0 | PLATE BLOCK                                | 1    |
| 45   | WSP-0754-03-00-00-0 | PLATE BLOCK SUPPORT                        | 1    |
| 46   | PDK-000176          | EXTERNAL TOOTH LOCK WASHER 6.4             | 4    |
| 47   | ZSP-0754-01-00-00-0 | DRIVE SET ASSY                             | 1    |
| 48   | SRB-000106          | HEX SOCKET HEAD CAP SCREW M6x16            | 2    |
| 49   | MTR-0754-01-04-00-0 | MOTOR ASSY                                 | 1    |
| 50   | WLK-0754-01-08-00-0 | LOCKING SHAFT                              | 1    |
| 51   | SRB-000518          | STUD BOLT                                  | 1    |

*This document is protected by copyrights.*

*Copying, using, or distributing without permission of JEI Drilling & Cutting is prohibited.*

| ITEM | PART NUMBER         | DESCRIPTION                             | Q-TY |
|------|---------------------|---|------|
| 52   | GLK-000014          | BALL KNOB                               | 1    |
| 53   | SRB-000078          | HEX SOCKET HEAD CAP SCREW M5x12         | 4    |
| 54   | KOL-0754-01-10-00-0 | DRIVE WHEEL                             | 4    |
| 55   | LOZ-000038          | BALL BEARING 12x28x8                    | 4    |
| 56   | PRS-000005          | EXTERNAL RETAINING RING 15z             | 4    |
| 57   | LNC-0476-01-14-00-0 | CHAIN                                   | 1    |
| 58   | WKR-000100          | HEX SOCKET BUTTON HEAD SCREW M6x10      | 1    |
| 59   | PDK-000037          | ROUND WASHER 6.5                        | 1    |
| 60   | NPN-0476-01-05-00-0 | CHAIN TENSIONER                         | 1    |
| 61   | TLJ-000095          | SLIDE BUSHING 10x12x08                  | 2    |
| 62   | KOL-0754-01-09-00-0 | CHAIN GEAR z16                          | 2    |
| 63   | WPS-000082          | PARALLEL KEY 4x4x8                      | 3    |
| 64   | WLK-0754-01-02-00-0 | FRONT DRIVE SHAFT                       | 1    |
| 65   | WLK-0754-01-03-00-0 | BACK DRIVE SHAFT                        | 1    |
| 66   | OGR-0754-01-11-00-0 | CAM LIMITER                             | 1    |
| 67   | PDK-000015          | ROUND WASHER 4.3                        | 2    |
| 68   | NKR-000013          | HEX NUT M4                              | 2    |
| 69   | SRB-000377          | HEX SOCKET HEAD CAP SCREW M3x20         | 1    |
| 70   | SRB-000336          | HEX SOCKET HEAD CAP SCREW M3x14         | 1    |
| 71   | MMS-0754-01-07-00-0 | CAM                                     | 1    |
| 72   | KOL-0752-01-06-00-0 | GEAR                                    | 1    |
| 73   | WKR-000435          | HEX SOCKET COUNTERSUNK HEAD SCREW M4x16 | 2    |
| 74   | KRP-0754-01-01-00-0 | BODY                                    | 1    |
| 75   | NKR-000115          | NUT NDM-16, M16x1.5                     | 2    |
| 76   | ZSP-0476-01-16-00-0 | LIMIT SWITCH ASSY                       | 1    |
| 77   | OBJ-000002          | HOLDER FOR FIXING LEADS 4               | 4    |
| 78   | WKR-000091          | HEX SOCKET BUTTON HEAD SCREW M4x8       | 3    |
| 79   | OSL-0754-01-06-00-0 | WHEEL COVER                             | 2    |
| 80   | WKR-000091          | HEX SOCKET BUTTON HEAD SCREW M4x8       | 5    |
| 81   | PLY-0754-01-05-00-0 | MAGNET BLOCK ASSY                       | 1    |
| 82   | WKR-000135          | HEX SOCKET COUNTERSUNK HEAD SCREW M5x14 | 10   |
| 83   | SRB-0752-23-00-00-0 | EYE BOLT M6                             | 2    |
| 84   | PRW-0476-04-00-01-0 | RIGHT GUIDE ARM ASSY                    | 1    |
| 85   | UCW-0754-04-00-00-0 | HANDLE                                  | 1    |
| 86   | SRB-000499          | HEX SOCKET HEAD CAP SCREW M6x80         | 4    |
| 87   | WKR-000473          | HEX SOCKET BUTTON HEAD SCREW M5x30      | 2    |

### WIRING DIAGRAM

