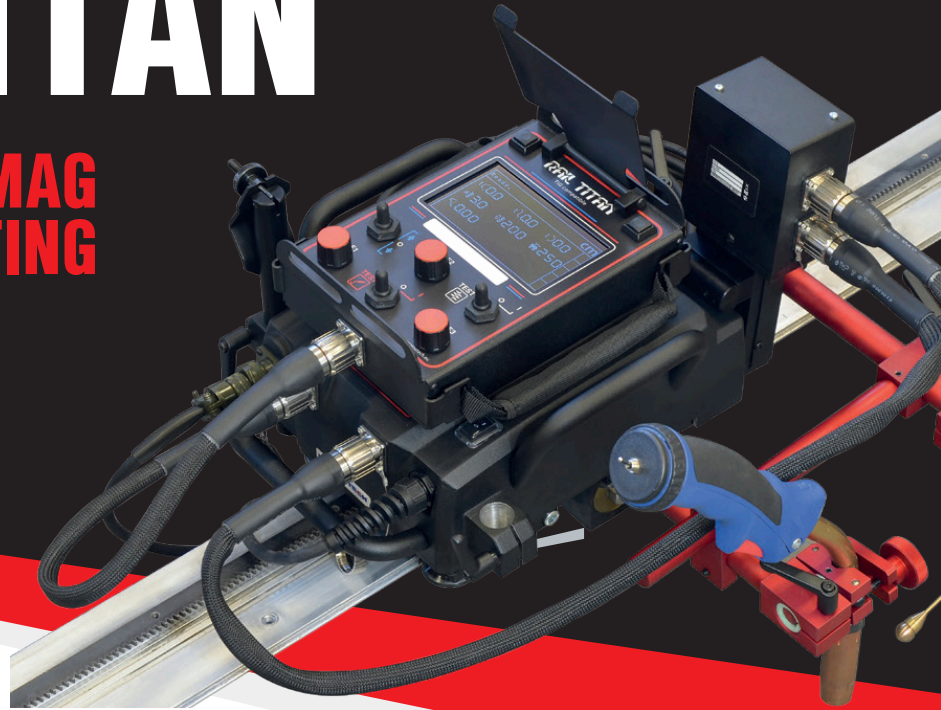


# STEELBEAST®

**JEI**  
Solutions  
Built for Industry

# RAIL TITAN

**MODULAR TIG-MIG-MAG  
WELDING AND CUTTING  
RAIL TRACTOR**



## STEELBEAST®'S RAIL TITAN

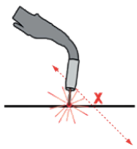
Rail Titan is fully modular mechanized tractor that can be custom configured for TIG-MIG-MAG welding, oxy-fuel or plasma cutting and gouging applications on flat or curved plate, tube and pipe. Linear torch oscillator produces straight, triangle, trapezoid and square weld paths. Rail Titan can travel on hi-flex, semi-flexible, rigid or ring tracks that can be clamped to ferrous materials with magnetic units and to non-ferrous materials by means of vacuum track system incl. vacuum pump and vacuum units.



CALL **01706 229 490** TO BOOK YOUR DEMONSTRATION NOW OR VISIT **WWW.STEELBEAST.CO.UK**



- ✓ Suitable for TIG welding (HF resistant)
- ✓ Robust design with die-cast aluminum housing
- ✓ Ergonomic remote control pendant with simple and easy to find control knobs makes adjustments possible without lifting of the operators welding hood
- ✓ Programmable path of stitch welds
- ✓ Suitable for variety of circumferential and irregular surface applications down to min. radius of 100 mm (4")
- ✓ Ring tracks on diameters from 200 mm (8") OD up to 3 m (10 ft) OD
- ✓ Hi-Flex tracks on diameters from 1500 mm (59") OD upwards
- ✓ Custom rolled tracks on diameters from 3 m (10 ft) OD up to 10 m (32 ft) OD
- ✓ Semi-flexible tracks can be flexed to minimum radius of 5 m (16 ft) without permanent deformation
- ✓ Seam tracking enables active compensation of torch position vertically and horizontally with and without oscillation
- ✓ New type of signal sockets/plugs feature increased HF immunity and improved grip for easier tightening & loosening
- ✓ Suitable for all welding positions on both ferromagnetic and non-ferromagnetic materials thanks to rack and pinion drive and various tracks equipped with magnetic or vacuum units
- ✓ Rail Titan produces consistent high quality welds and cuts in a fraction of the time required by manual operations
- ✓ Wide input voltage range: 100-240V, 50-60Hz 1ph (single phase)



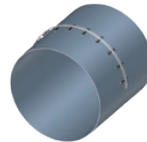
Linear oscillation with trapezoid, triangle, square and straight line paths



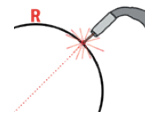
Ring tracks from 200 mm (8") OD up to 3 m (10 ft) OD



Hi Flex Track  
min OD 1500 mm (5 ft)  
min ID 3400 mm (11 ft)



Custom rolled tracks from 3 m (10 ft) OD up to 10 m (32 ft) OD



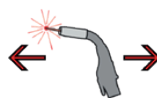
Min. path convex radius for semiflexible tracks is 5 m (16 ft)



Continuous welding



Stitch welding



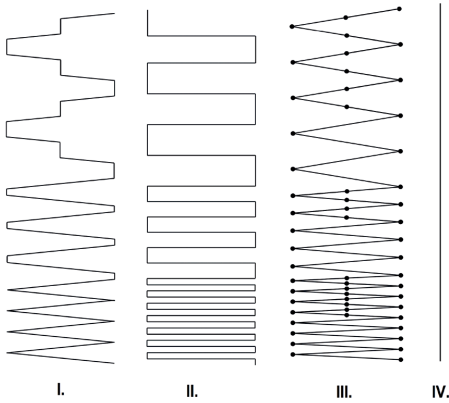
Horizontal speed  
0-250 cm/min



Vertical speed  
0-250 cm/min

**RAIL TITAN CAN WORK IN ALL WELDING POSITIONS ON BOTH FERROMAGNETIC AND NON-FERROMAGNETIC MATERIALS BY USING RACK AND PINION DRIVE AND VARIOUS TRACKS EQUIPPED WITH MAGNETIC OR VACUUM UNITS.**

CALL **01706 229 490** TO BOOK YOUR DEMONSTRATION NOW OR VISIT **WWW.STEELBEAST.CO.UK**

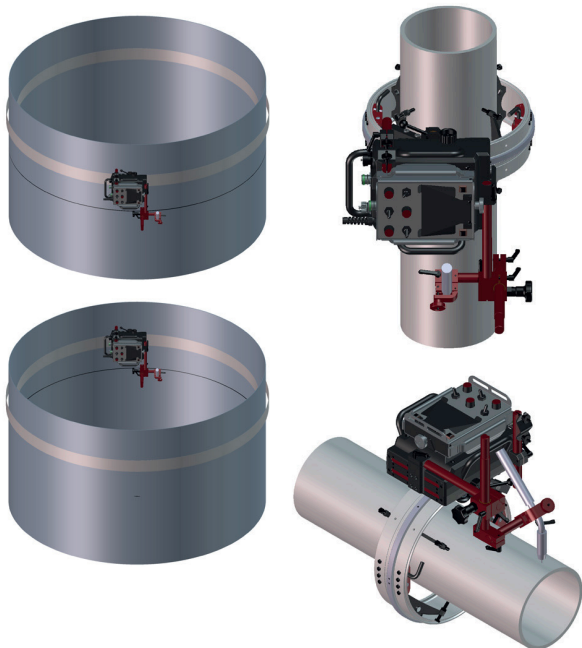
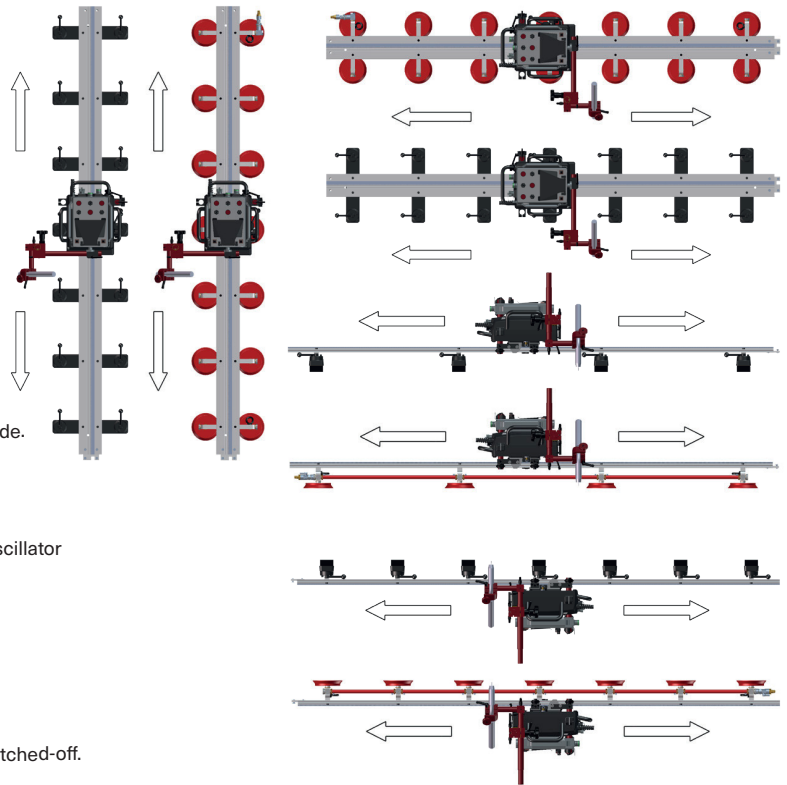


I. Trapezoid - The tractor travels continuously even during dwell mode. Weld path is determined by weave speed and dwell time at center and on sides of the weld path.

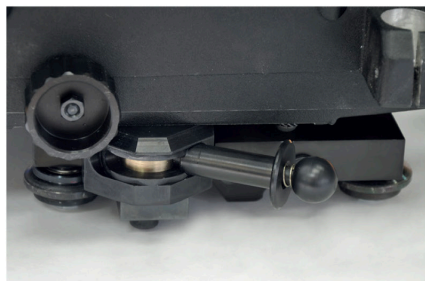
II. Square - The tractor travels only during dwell and stops during oscillator cross travel. Only dwell time determines the weld path, and weave speed has no influence.

III. Triangle - The tractor travels only during weaving. Both the tractor and oscillation stop during dwell mode.

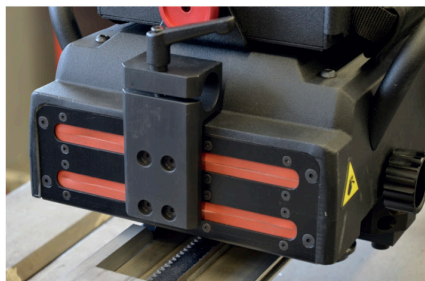
IV. Straight - The tractor travels continuously while oscillation is switched-off.



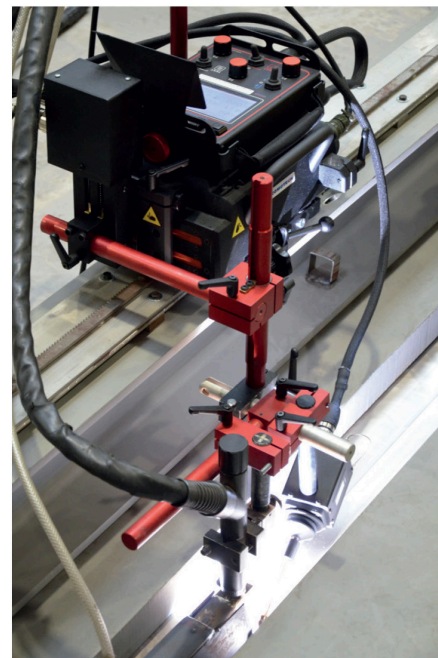
CALL **01706 229 490** TO BOOK YOUR DEMONSTRATION NOW OR VISIT **WWW.STEELBEAST.CO.UK**



Single lever with lock to position Rail Titan to track



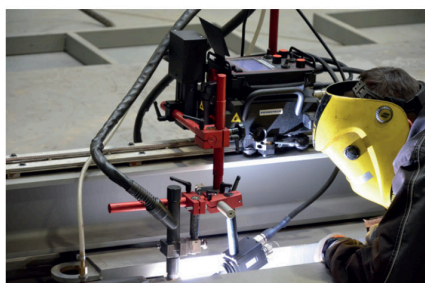
Silicone covers protect against dirt and spatter



Seam tracking works with and without oscillation

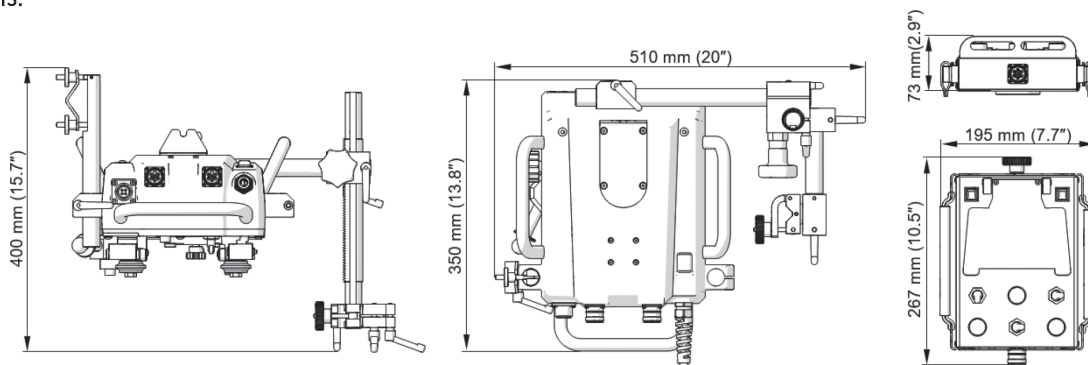


New type of signal sockets and plugs



TIG welding of titanium plate

### Dimensions:



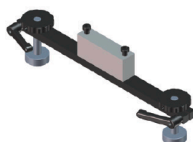
### ■ Ring tracks

For circumferential applications from 200 mm OD up to 3000 mm OD (from 8" to 10 ft.)

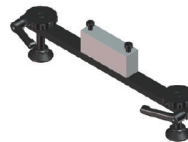
Ring tracks can be equipped with various supports depending on the customer's needs.



Support with bolts  
WSP-0523-14-02-00-0



Support with magnets  
WSP-0523-14-12-00-0



Support with plastic feet  
WSP-0523-14-11-00-0



Bracket for ring track supports to expand pipe diameter range by 50 mm downwards  
DYS-0523-14-14-00-0

CALL **01706 229 490** TO BOOK YOUR DEMONSTRATION NOW OR VISIT **WWW.STEELBEAST.CO.UK**

### Standard accessories



Remote control pendant



Power cord 3 m (10 ft)  
PWD-0466-18-00-00-0 (230 V CEE)  
PWD-0466-16-00-00-0 (115 V USA)  
PWD-0466-23-00-00-0 (115 V UK)



6.5 m (21 ft) arc ignition cable  
KBL-0466-17-00-00-0



5 m (16.5 ft) remote control cable  
3 m (10 ft) remote control cable  
0.5 m (1.5 ft) remote control cable



300 mm (12") rod  
WSP-0523-16-00-00-0



300 mm (12") rack  
RAM-0523-17-00-00-0



Rackholder  
ZSP-0475-62-00-00-0



Clamping block with levers  
KST-0525-11-00-00-0



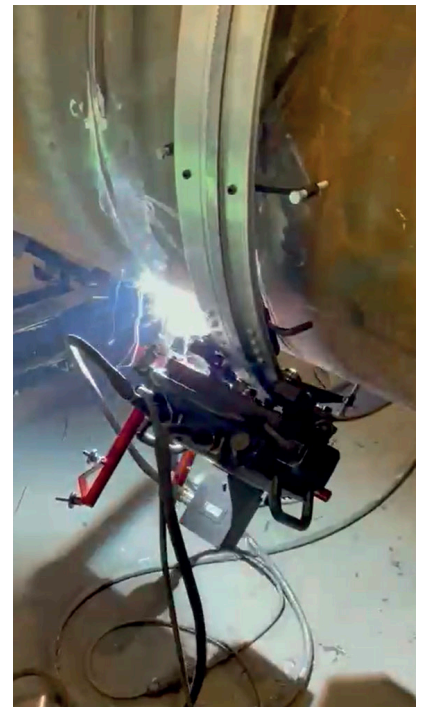
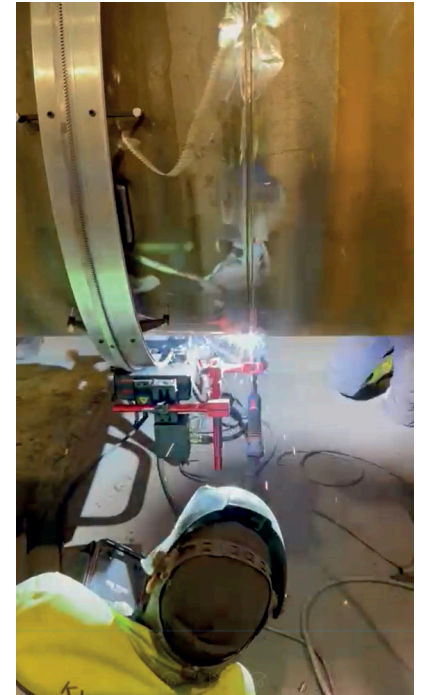
Short rod torch holder with fits-all clamp  
UCW-0476-20-00-00-0



Cable anchor  
UCW-0654-02-00-00-0

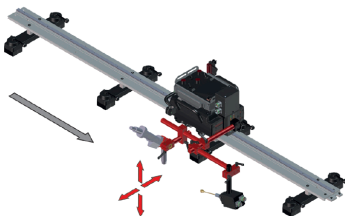


Contact block  
ZDR-0523-76-00-00-0



### Optional equipment

Configuration with seam tracking horizontally and vertically requires an optional seam tracking attachment and a motorized vertical slide



Seam tracking attachment  
CZJ-0654-05-00-00-0

Rod for sensor tips  
WSP-0523-07-01-13-0

Sensor tip (rod required)  
ADT-0506-43-00-00-0

Sensor tip (rod required)  
ADT-0506-40-00-00-0

Sensor tip (rod required)  
ADT-0506-41-00-00-0



Motorized vertical slide  
OSK-0654-04-00-00-0

Rack adjustment tool  
PKT-0341-13-00-00-0

Contact block for Hi-Flex track  
ZDR-0673-08-00-00-0



Transport Attachment  
PEP-0523-93-00-00-0

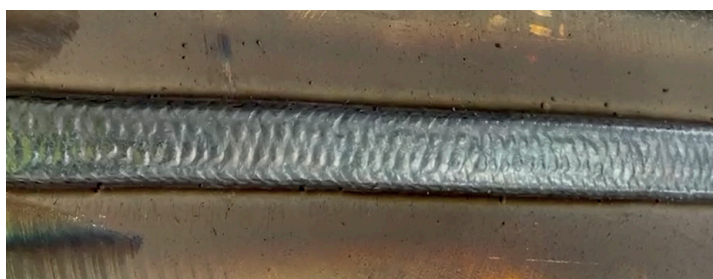
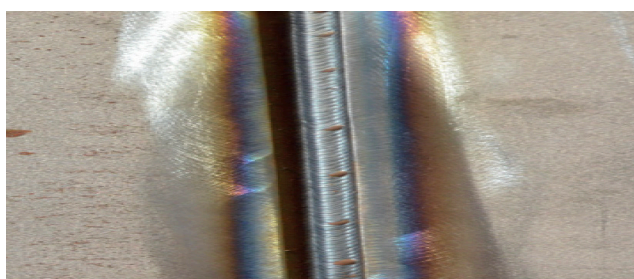
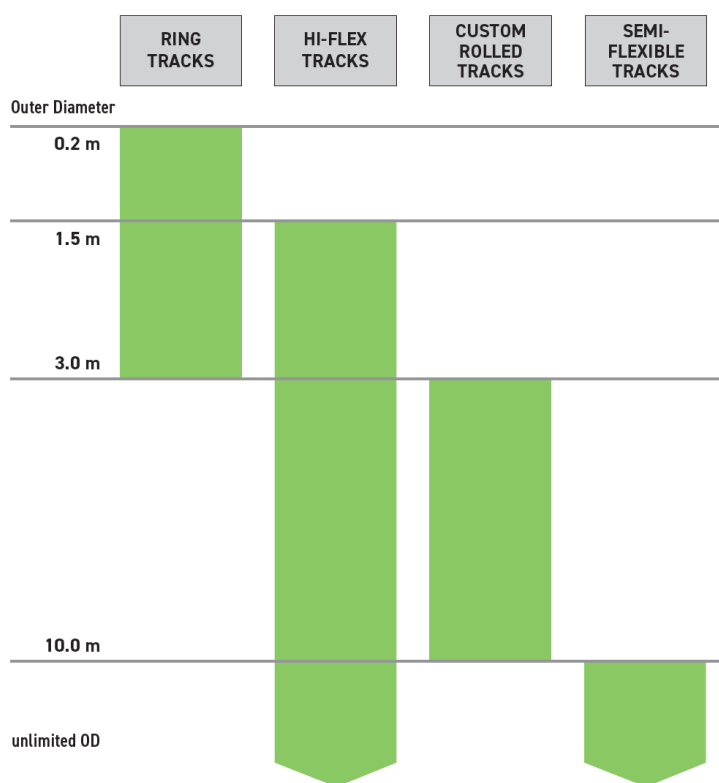


Signal cable to connect Rail Titan  
to OSC-8 pendulum oscillator  
PWD-0654-10-00-00-0



CALL 01706 229 490 TO BOOK YOUR DEMONSTRATION NOW OR VISIT [WWW.STEELBEAST.CO.UK](http://WWW.STEELBEAST.CO.UK)

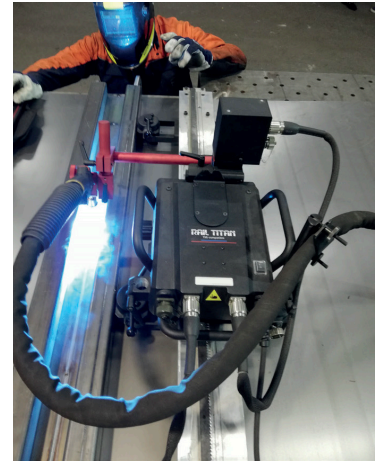
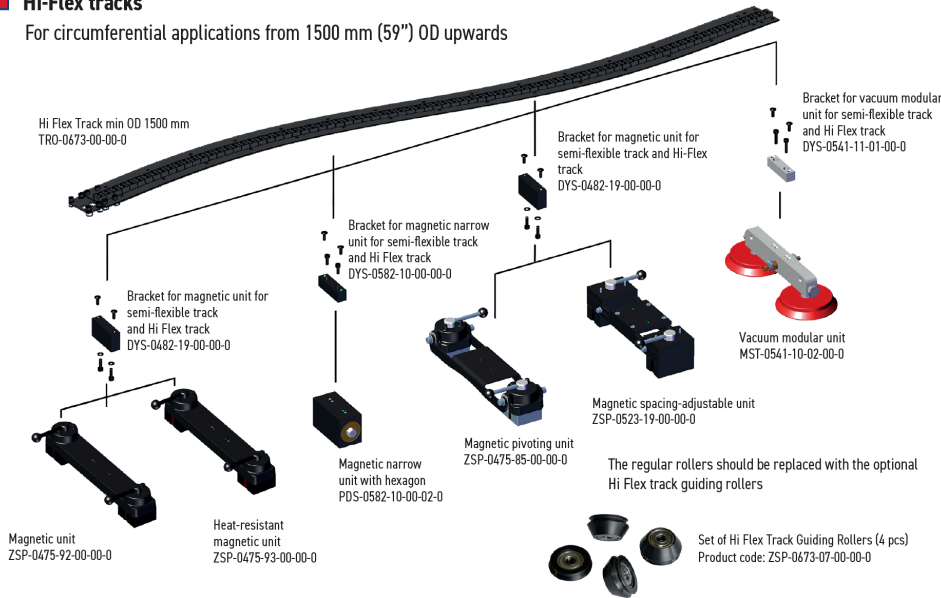
**SteelBeast® offers a wide range of tracks suitable for variety of circumferential and irregular surface applications down to min. radius of 100 mm (4”).**



CALL **01706 229 490** TO BOOK YOUR DEMONSTRATION NOW OR VISIT [WWW.STEELBEAST.CO.UK](http://WWW.STEELBEAST.CO.UK)

### ■ Hi-Flex tracks

For circumferential applications from 1500 mm (59") OD upwards

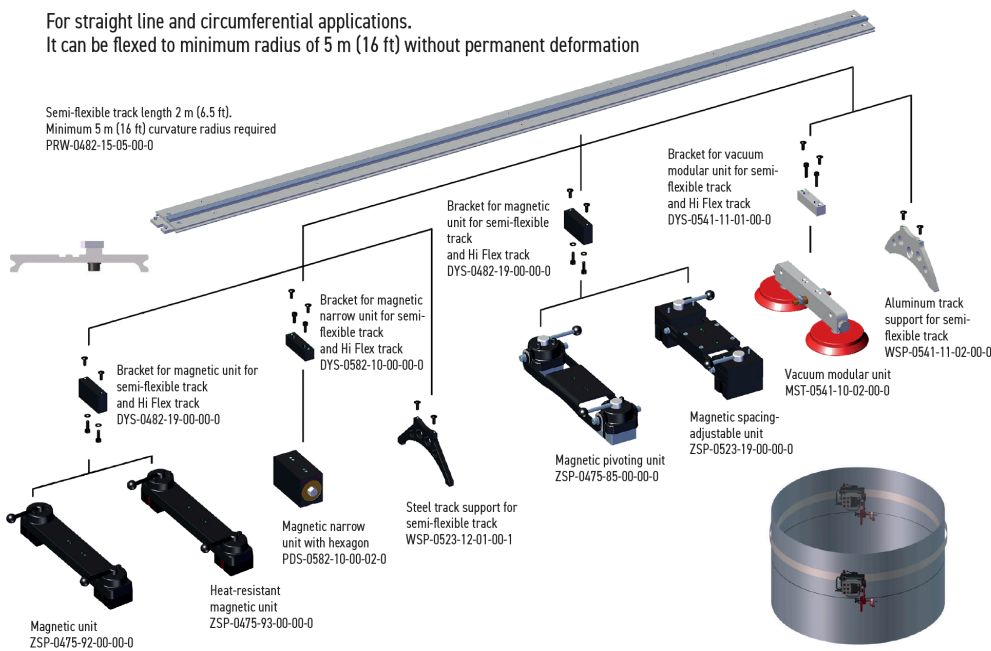


### ■ Custom rolled tracks

Semi-flexible tracks can be flexed permanently within the radius range from 1.5 m up to 5 m (5 ft. up to 16 ft.)

### ■ Semi-flexible tracks

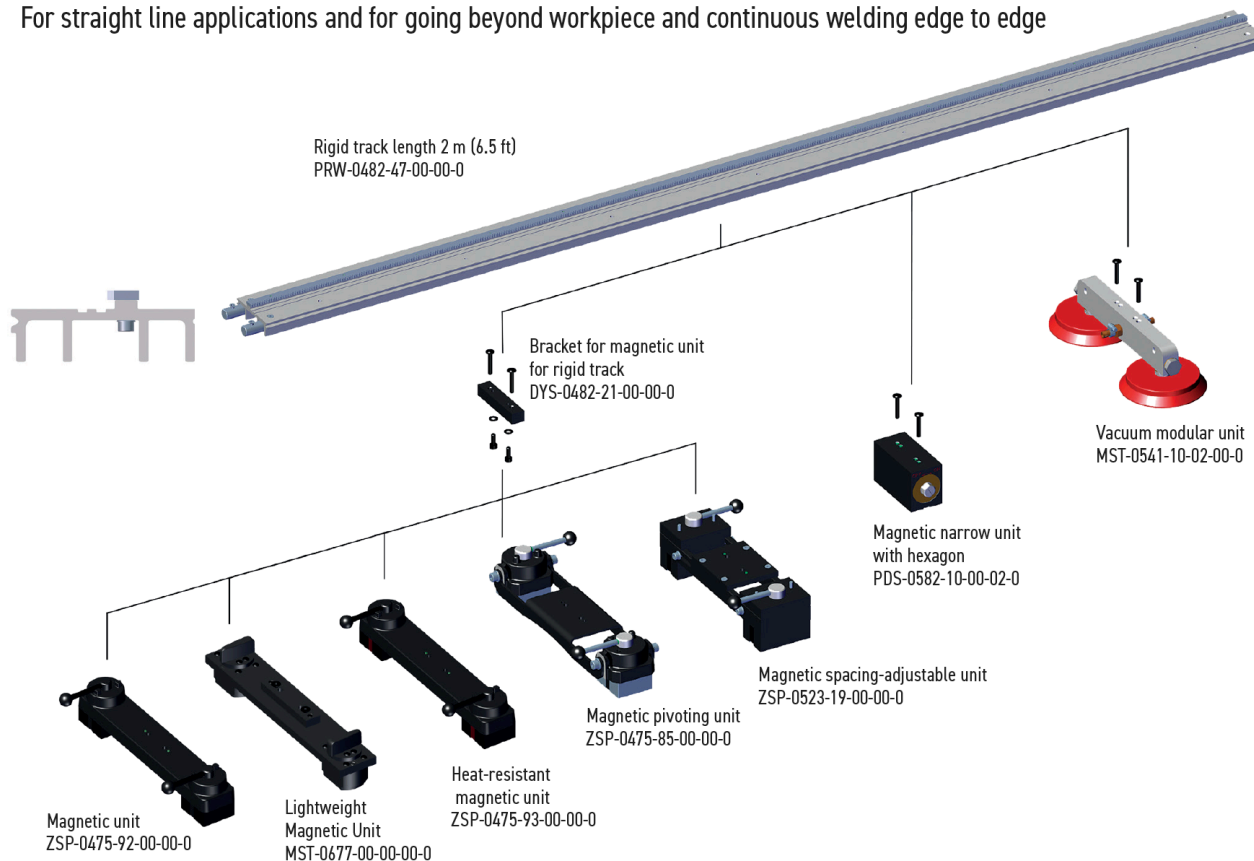
For straight line and circumferential applications.  
It can be flexed to minimum radius of 5 m (16 ft) without permanent deformation



CALL 01706 229 490 TO BOOK YOUR DEMONSTRATION NOW OR VISIT [WWW.STEELBEAST.CO.UK](http://WWW.STEELBEAST.CO.UK)

### ■ Rigid tracks

For straight line applications and for going beyond workpiece and continuous welding edge to edge



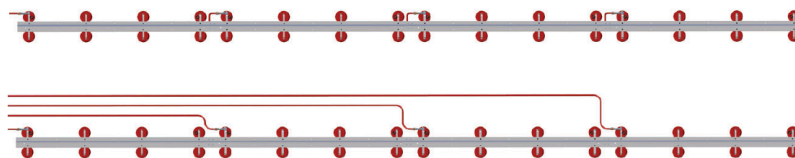
### ■ Vacuum tracks system

For non-ferrous applications

Promotech's vacuum fixing system provides firm grip of rail tracks on both ferromagnetic and non-ferromagnetic materials (aluminum or stainless steel constructions)

Portable vacuum pump with safety reservoir generates vacuum and supports up to 21 vacuum units

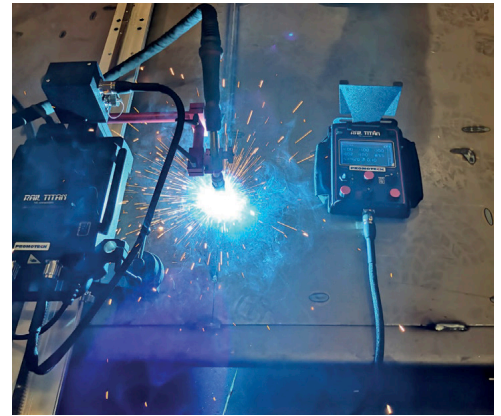
System can be configured as serial or parallel connection



CALL 01706 229 490 TO BOOK YOUR DEMONSTRATION NOW OR VISIT [WWW.STEELBEAST.CO.UK](http://WWW.STEELBEAST.CO.UK)



RAIL TITAN Technical specification		
Voltage		1-100-240V, 50-60Hz
Power		60 W
Welding position (according to EN ISO 6947 and AWS/ASME)	Horizontal	PA/1F/1G PB/2F PC/2G PD/4F PE/4G
	Vertical	PF/3G PG/3F (contact your dealer) PG/3G
Fixing on pipes and round workpieces	Ring tracks (OD)	200 mm (8") - 3 m (10 ft)
	Hi-flex tracks (OD)	Minimum 1.5 m (5 ft)
	Hi-flex tracks (ID)	Minimum 3.4 m (11 ft)
	Custom rolled tracks (OD)	3-10 m (10-32 ft) (contact your dealer)
	Semi-flex tracks (OD)	Minimum 10 m (32 ft)
Torch type		MIG/MAG, TIG, oxy-fuel, plasma
MIG/MAG torch diameter		16-22 mm (0.63-0.87")
Minimum workpiece thickness for magnetic clamping		5 mm (0.2")
Horizontal pulling force		400 N
Vertical pulling force		315 N
Horizontal speed		0-250 cm/min (0-98 in/min)
Vertical speed		0-250 cm/min (0-98 in/min)
Oscillation type		Linear
Weld path		Straight, triangle, trapezoid, square
Oscillation width		0.1-11.8 cm (0.04-4.5")
Oscillation speed		10-200 cm/min (5-78 in/min)
Oscillation dwell time at center and on ends		0-5 s
Maximum oscillator pulling force		100 N
Weight (incl. standard accessories)		13 kg (29 lbs)
Product code		WOZ-0654-10-20-00-0



### Standard shipping set:

- Rail Titan tractor
- Plastic box
- Remote control pendant
- 5 m (16.5 ft) remote control cable
- 3 m (10 ft) remote control cable
- 0.5 m (1.5 ft) remote control cable

### Applications:

- Trailer manufacturing
- Truck tanks
- Oil tanks
- Water storage tanks

- Power cord
- 6.5 m (21 ft) arc ignition cable
- 300 mm (12") rod
- 300 mm (12") rack with 180 mm (7") adjustment
- Rack holder
- Clamping block with levers

- Pressure vessels
- Vessel overlay / hardfacing
- Bridge girders
- Structural steel
- Structural towers

- Short rod torch holder with fits-all clamp
- Cable anchor
- Contact block
- 6 mm hex wrench
- Operator's manual

- Panel welding
- Transformers
- Shipyards
- Any application demanding long continuous welds

CALL **01706 229 490** TO BOOK YOUR DEMONSTRATION NOW OR VISIT **WWW.STEELBEAST.CO.UK**