

STEEL BEAST®

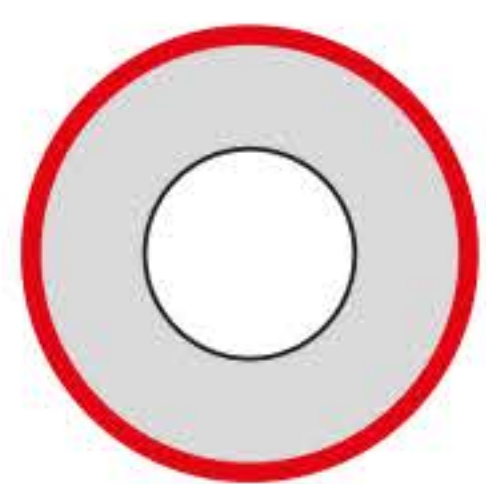
JEI
Solutions
Built for Industry

PB5

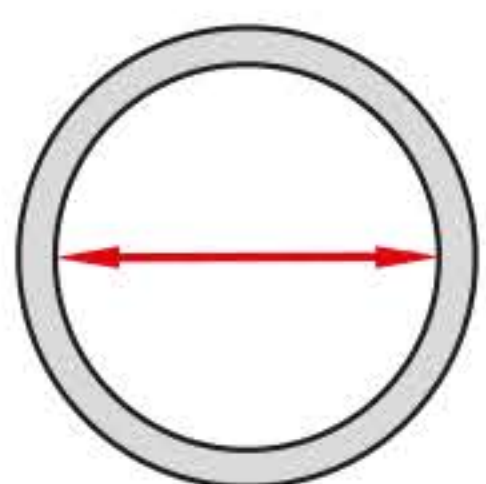
PORTABLE PIPE BEVELLER



**Max wall thickness 12 mm (0.47")
up to OD 114 mm (4.49")**



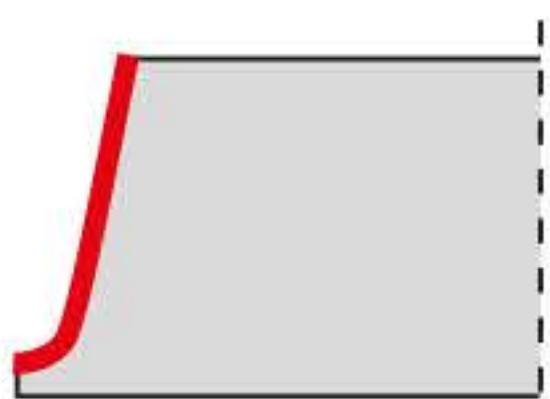
**Pipe OD beveling
114 mm (4.49") up to 140 mm (5.51")
/option/**



**ID 32-107 mm (1.26 - 4.21")
25-32 mm (1" - 1.25") /option/
107-133 mm (4.21 - 5.24") /option/**



Facing off



J-groove beveling

PB5 is a handy, portable pipe beveling machine suitable for milling edges of pipes made of carbon and stainless steels, aluminum alloys and copper-nickels.

It can be used efficiently by a single operator. Self-centering expandable mandrels provide quick and proper alignment to a pipe or a tube prior to machining operations.

Depending on the tool bits in use PB5 can perform external beveling, J-beveling, internal calibration and facing pipes from inside diameters of 32 mm (1.26") to outside diameters of 114 mm (4.49") or up to 140 mm (5.51") as option. All these weld prep operations are made fast and easy. Up to three tool bits can be mounted and work, simultaneously.

According to users preferences and depending on site conditions PB5 machine can be operated with a high quality powerful pneumatic motor, top quality high torque electric motor or battery drive.

Optional small spindle disc and ratchet wrench enable pipe machining in difficult to access and space restricted areas.

CALL 01706 229 490 TO BOOK YOUR DEMONSTRATION NOW OR VISIT WWW.STEELBEAST.CO.UK



Technical Specifications		PB5/E	PB5/A	PB5/B
Electric motor		1.100 W	-	-
Supply		110-120 V / 50-60 Hz 220-240 V / 50-60 Hz	-	18 V DC, 5.2 Ah
Rotational speed (nominal)		gear 1 – 0 to 90 rpm gear 2 – 0 to 300 rpm	90 rpm	-
Pneumatic drive		-	800 W	-
Air requirement		-	0,6 MPa (87 PSI)	-
Air consumption		-	1600 l/min (49.4 CFM)	-
Pipe diameter		32 mm ID to 114 mm OD (1.26-4.49") ID 25-32 mm (1"-1.25")/opt ion/ID 107-133 mm (4.21"-5.24")/opt ion/	32 mm ID to 114 mm OD (1.26-4.49") ID 25-32 mm (1"-1.25")/opt ion/ ID 107-133 mm (4.21"-5.24")/opt ion/	32 mm ID to 114 mm OD (1.26-4.49") ID 25-32 mm (1"-1.25")/option/ ID 107-133 mm (4.21"-5.24")/option/
Maximum pipe wall thickness for outside diameter	up to 114 mm	12 mm (0.47")	12 mm (0.47")	12 mm (0.47")
	114-124 mm*	10 mm (0.39")	10 mm (0.39")	10 mm (0.39")
	124-132 mm*	8 mm (0.31")	8 mm (0.31")	8 mm (0.31")
	132-140 mm*	6 mm (0.24")	6 mm (0.24")	6 mm (0.24")
Weight (incl. motor)		11 kg (24 lbs)	10 kg (22 lbs)	10 kg (22 lbs) includes battery

*Available with the optional 140 mm spindle disk set.



Pneumatic motor
Product Code:
PB5-WM

Battery drive 18 V
with connection set



Connection set for battery drive
Product Code: ZST-0472-22-00-00-0

Electric motor 230 V with connection set



Connection set for electric motor
Product Code: PB5-MCS

Electric motor
Product Code:
110V PB5-EM/1
220V PB5-EM/2

Battery drive for PRO-5 beveller
incl. 2 batteries 18 V, 5.2 Ah
Product Code: PB5-BD

STANDARD SHIPPING SET

- ✔ PB5 (without motor, tool bits)
- ✔ Metal box
- ✔ Standard self-centering expandable mandrel for pipe ID Ø 32 – 107 mm (1.26 – 4.21")
- ✔ 118 mm spindle disc
- ✔ Jaw blocks (1,2,3,4,5,6) – 3 sets
- ✔ Set of tools
- ✔ Coolant container
- ✔ Operator's manual

Product Code: PB5-WM
(PB5 without motor)



CALL 01706 229 490 TO BOOK YOUR DEMONSTRATION NOW OR VISIT WWW.STEELBEAST.CO.UK

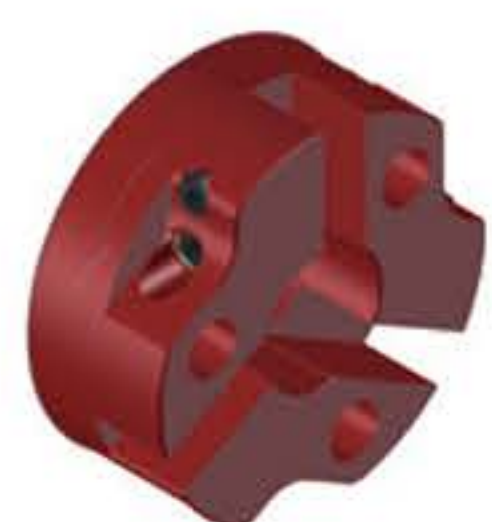
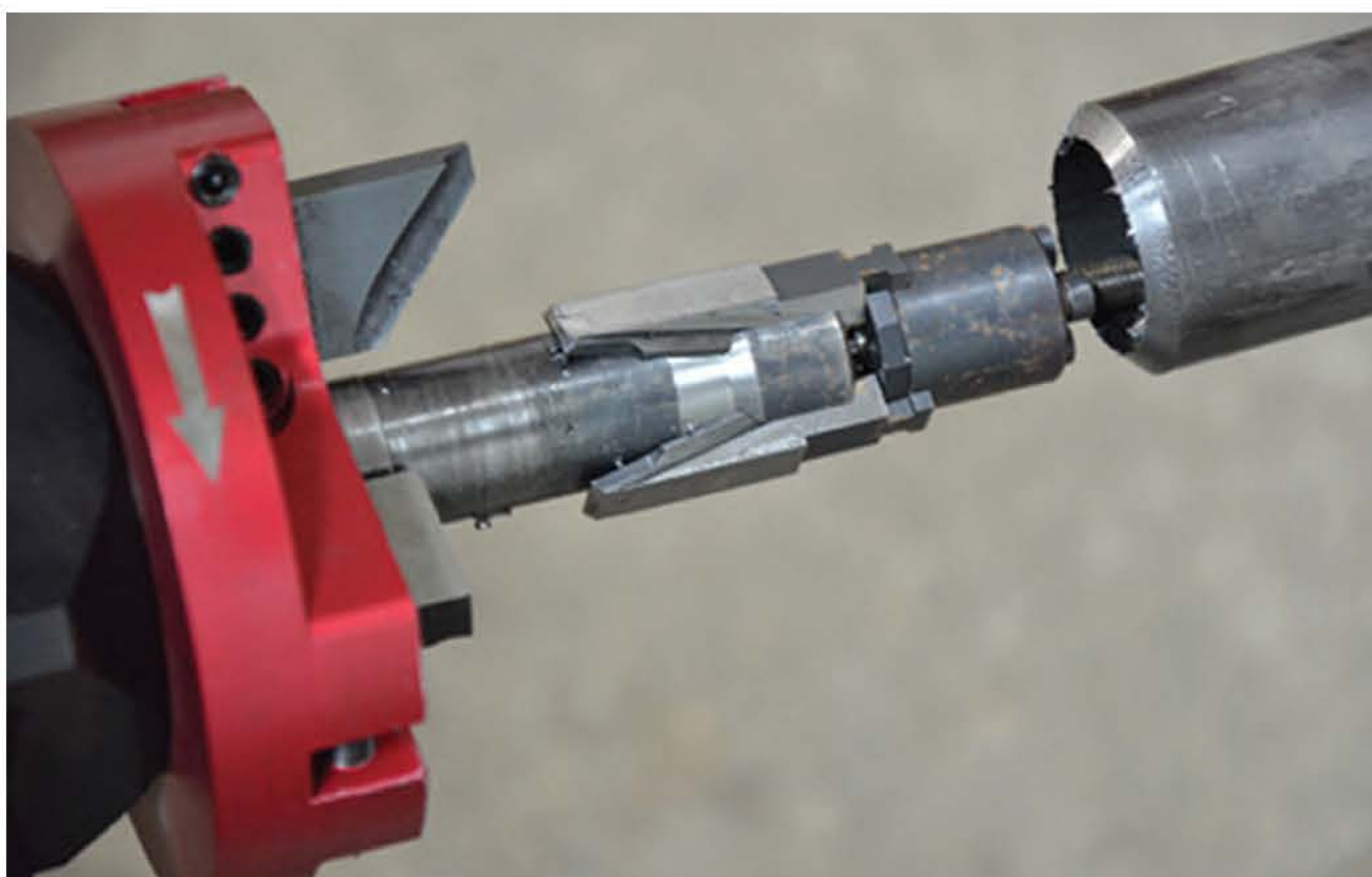


Small mandrel
ID 25 – 32 mm (1" – 1-1/4")
Product Code: PB5-SM

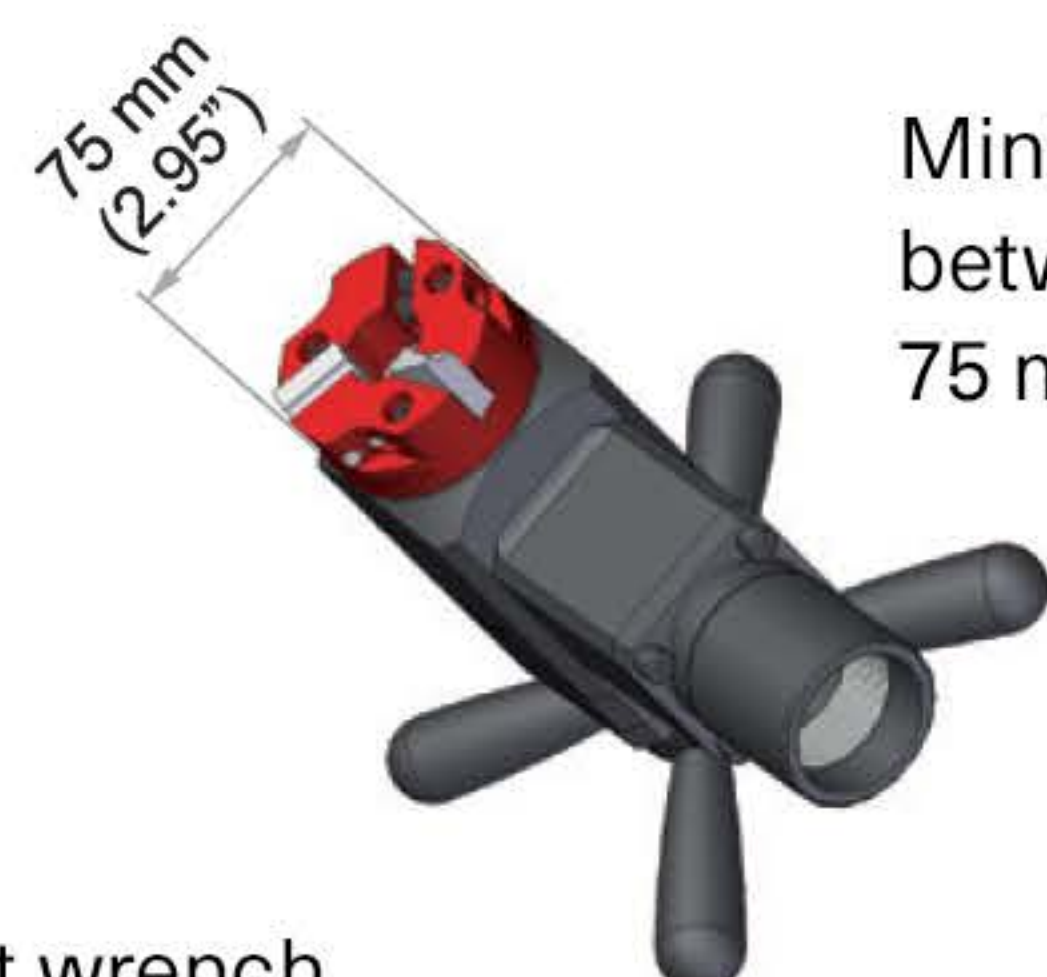
Battery charger 18 V
Product Code for Europe: LDW-000008
Product Code for USA: LDW-000009
Product Code for UK: LDW-000010



Optional
Battery 18 V, 5.2 Ah
Product Code: AKM-000088



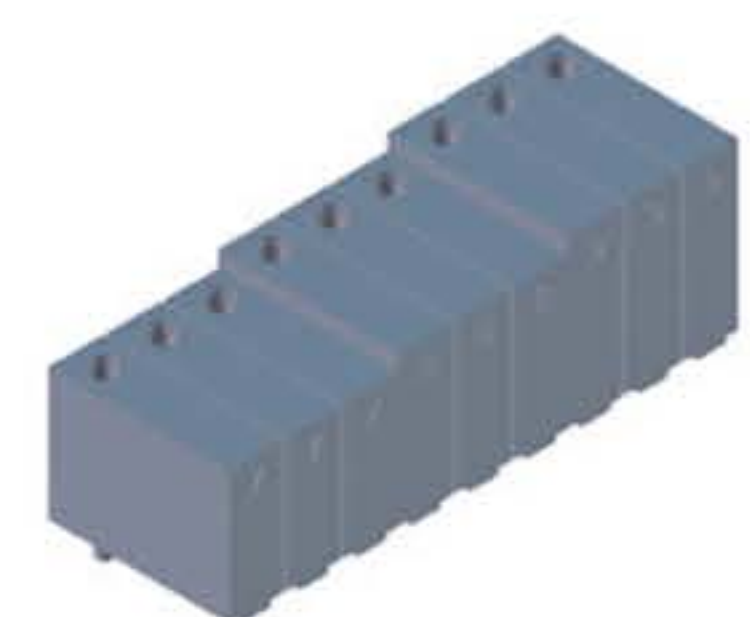
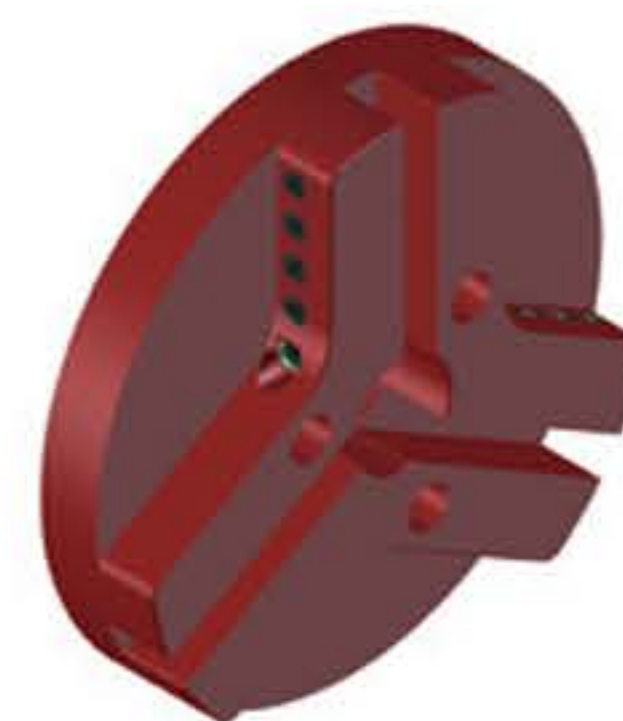
75 mm spindle disc
Product Code:
PB5-SD75



Minimum distance
between tubes is
75 mm (2.95")



Ratchet wrench
Product Code: KLC-000045



Extension set for OD Ø up to 140 mm (5.51") including
140 mm spindle disc and jaw blocks (7, 8, 9) – 3 sets
Product Code: PB5-ES

CALL 01706 229 490 TO BOOK YOUR DEMONSTRATION NOW OR VISIT WWW.STEELBEAST.CO.UK

PB5-F030 for steel PB5-F030/SS for stainless steel	F0-30 0° facing tool bit	
PB5-B30 for steel PB5-NB30/SS for stainless steel	B30 30° bevelling tool bit*	
PB5-B30D for steel PB5-NB30D/SS for stainless steel	B30d 30° bevelling tool bit**	
PB5-B375 for steel PB5-B375/SS for stainless steel	B375 37.5° bevelling tool bit*	
PB5-B375D for steel PB5-B375D/SS for stainless steel	B375d 37.5° bevelling tool bit**	
PB5-B45 for steel	B45 45° bevelling tool bit*	
PB5-B45D for steel	B45d 45° bevelling tool bit**	

PB5-IC1540 for steel	IC15-40 15° internal calibration tool bit	
PB5-IC1540D for steel	IC15-40 15° internal calibration tool bit (for Φ over 56 mm)	
PB5-IB1260 for steel	IB12-60 12° internal bevelling	
PB5-J10-R6 for steel	J10-R6 10° J-bevelling tool bit	
PB5-J15-R2 for steel	J15-R2 15° J-bevelling tool bit	
PB5-J20-R8 for steel	J20-R8 20° J-bevelling tool bit	
PB5-J20-R1 for steel	J20-R1 20° J-bevelling tool bit	

Tool bits for stainless steel feature TiAlN coating

* for diameters over 56 mm, if works together with 0° facing tool bit

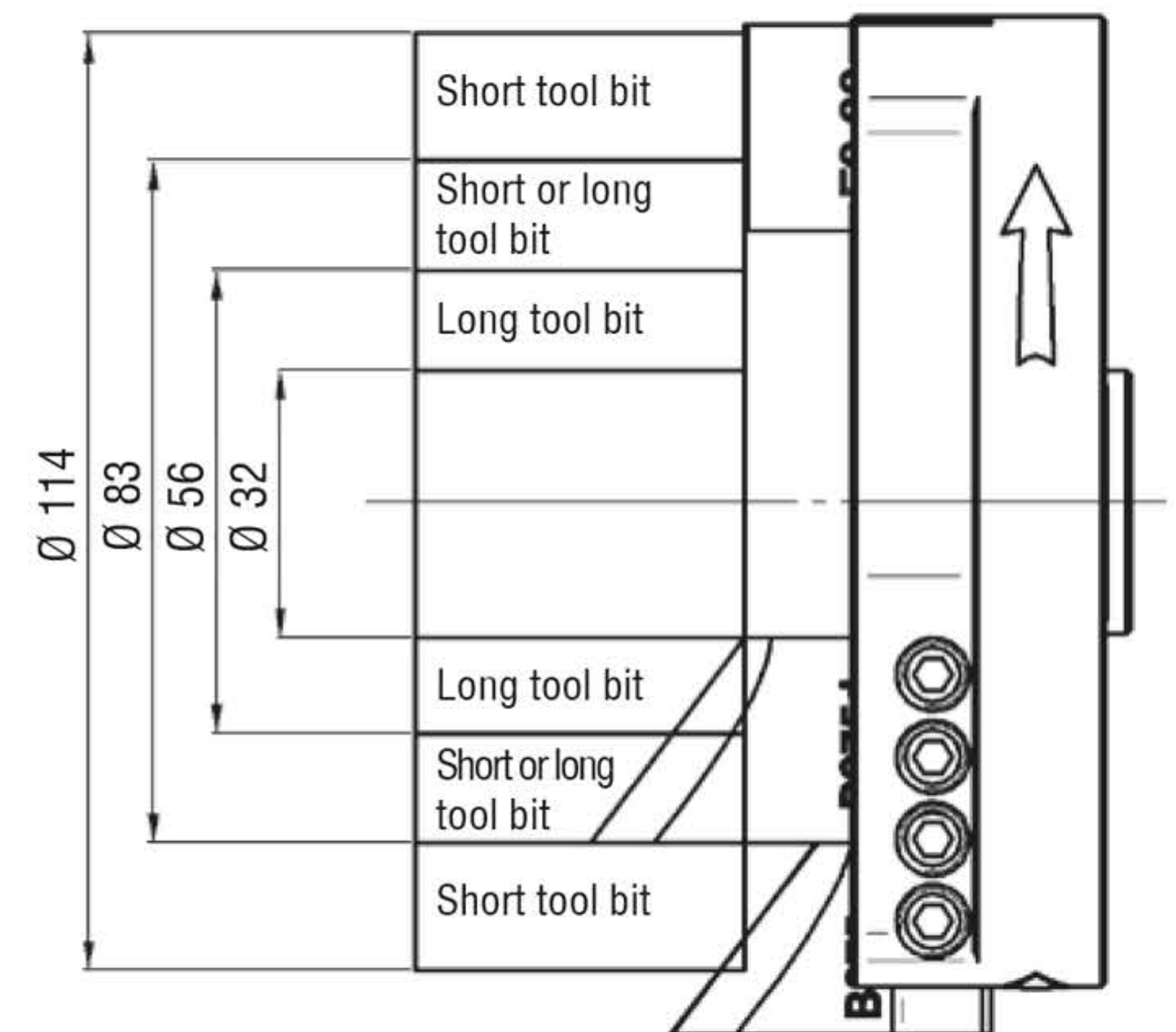
** for diameters under 83mm, if works together with 0° facing tool bit



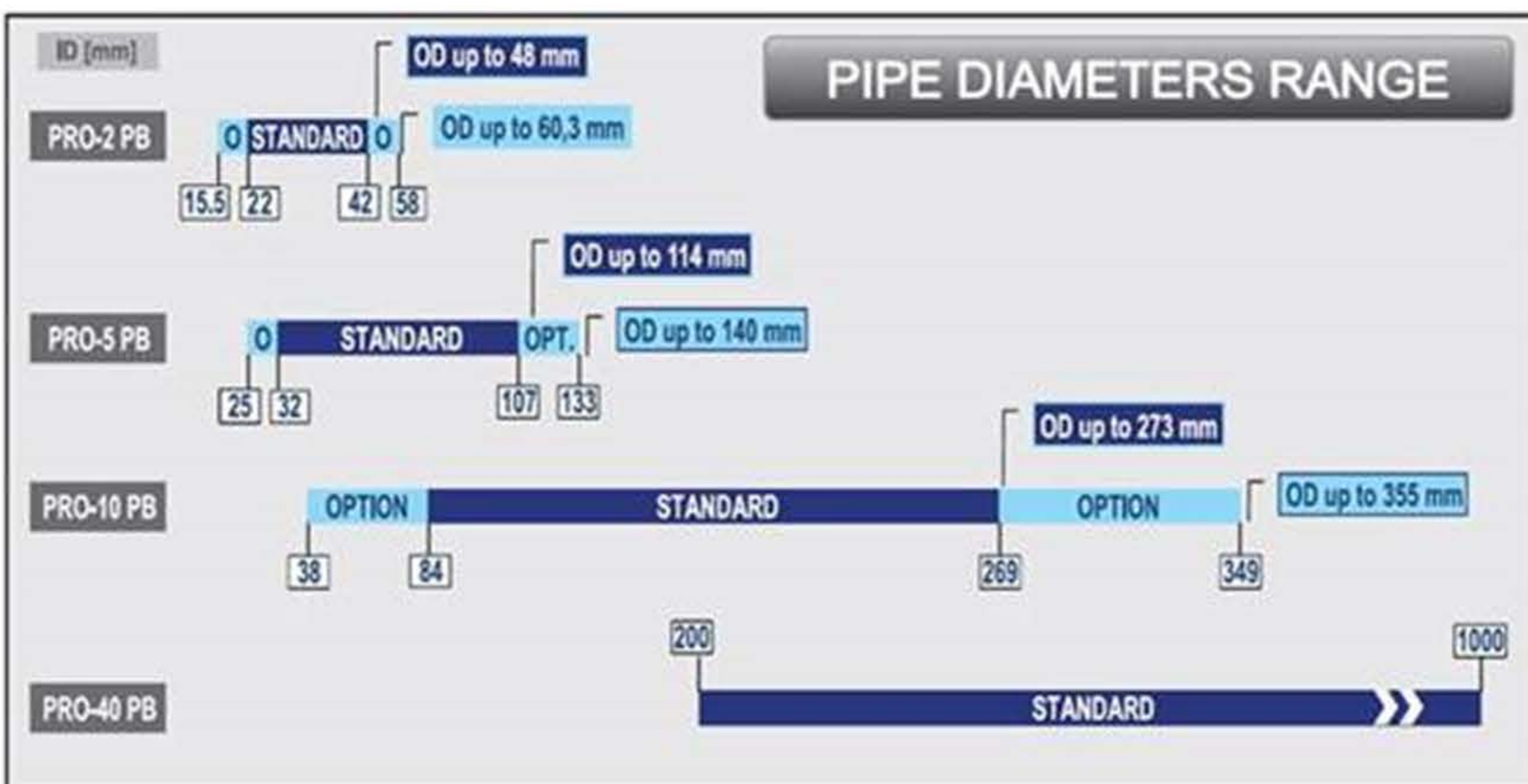
Wide range of tool bits for various applications.



Stainless steel machining is available by means of special tool bits



Together with 0° facing tool bit either standard or long beveling tool bits are in use depending on pipe diameter



Air preparation set
Product Code:
PB5-APS

CALL 01706 229 490 TO BOOK YOUR DEMONSTRATION NOW OR VISIT WWW.STEELBEAST.CO.UK

