

STEEL BEAST®

GECKO

FILLET WELDING CARRIAGE

JEI
Solutions
Built for Industry



GECKO is a portable mini fillet welder designed to produce consistent high-quality welds.

It features 4-wheel drive system with magnetic traction and a control loop feedback mechanism which provides speed stabilization in all welding positions.

Constant, continuous and repeatable travel speed enables weld bead geometry that is exact to the required specifications, thus reducing costly over welding and decreasing filler metal usage, substantially.

GECKO compact welding tractor weights only 8 kg (17 lbs).

APPLICATIONS

- Trailer manufacturing
- Truck tanks
- Oil tanks
- Water storage tanks
- Transformers
- Shipyards
- Any application demanding a long, continuous fillet weld



GECKO HS (High Speed)

New special version for specific applications is available now.

GECKO HS (High Speed)

with increased horizontal speed up to 220 cm/min (86.6 in/min) is suitable for both speed welding and plasma cutting.

CALL **01706 229 490** TO BOOK YOUR DEMONSTRATION NOW OR VISIT WWW.STEELBEAST.CO.UK

WWW.JEIUK.COM

JEI Solutions



GECKO FILLET WELDING APPLICATIONS



Continuous welding



Dual torch welding



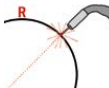
Horizontal speed 0–110 cm/min
(0–43.3 in/min)



Vertical speed 0–100 cm/min
(0–39.4 in/min)



Dual Arc Ignition



Min. path convex radius 1000 mm (3.5 ft)

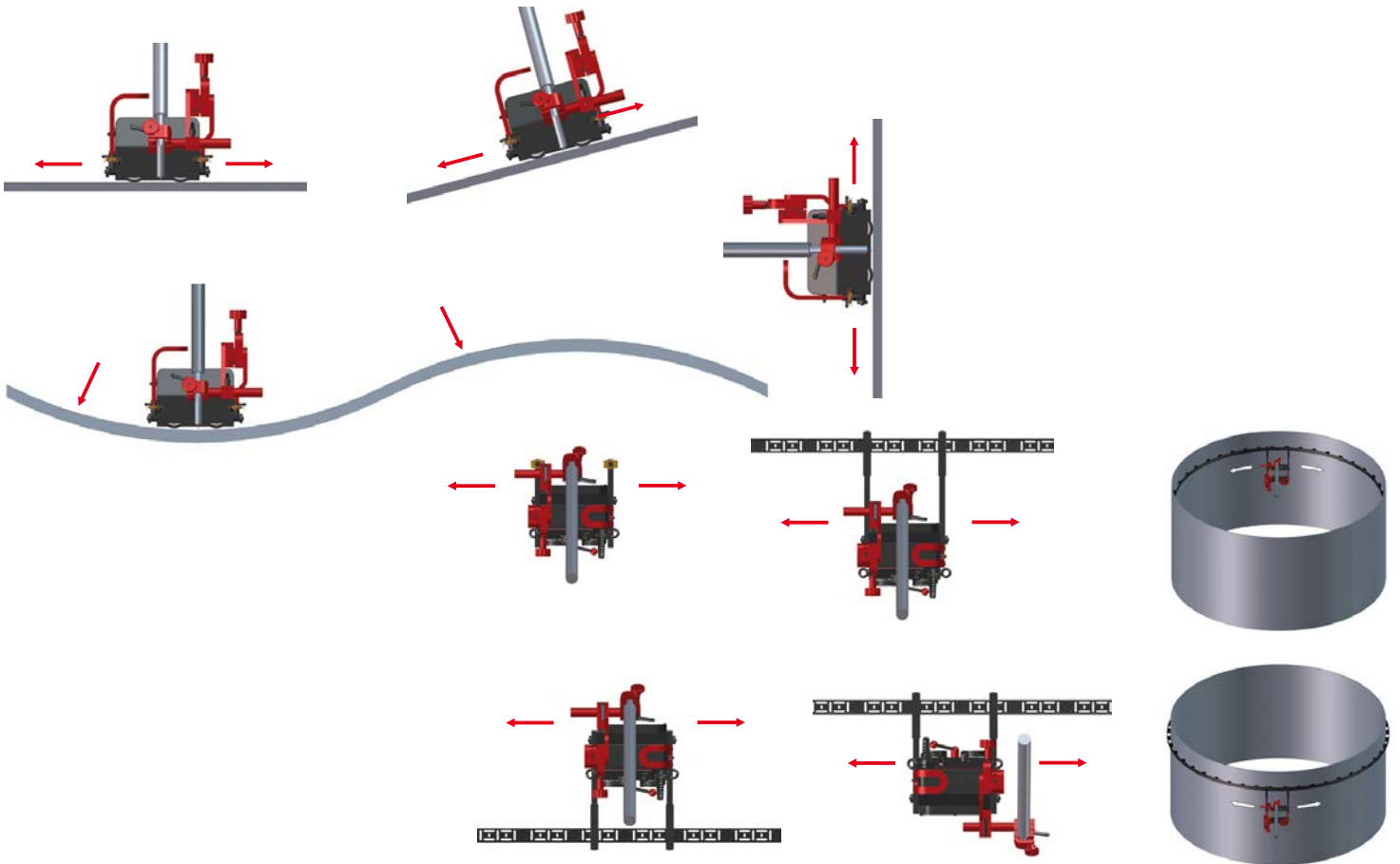


Min. path concave radius 1250 mm (4 ft)



Weight 8 kg (18 lbs)

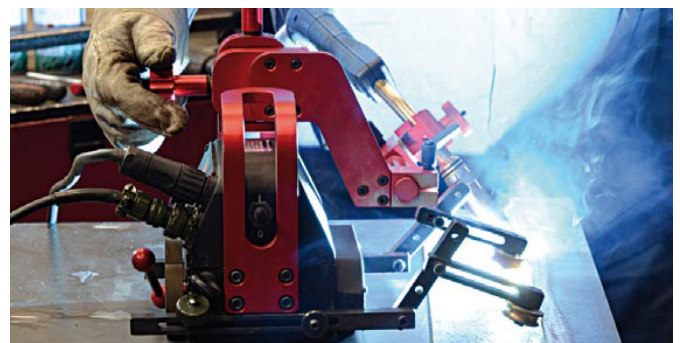
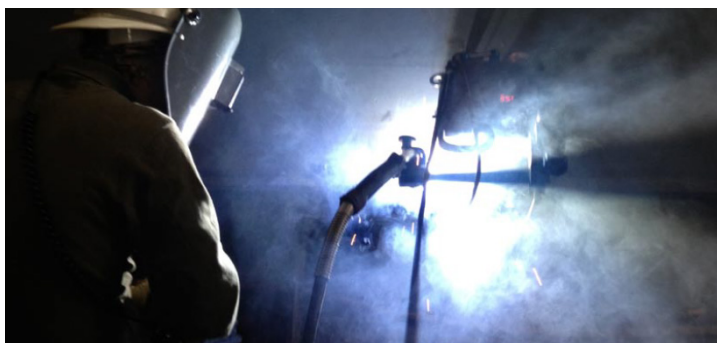
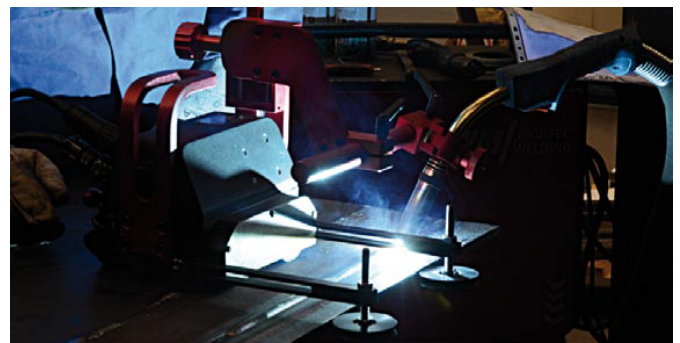
VERSATILITY OF APPLICATIONS INCLUDING OUT-OF-POSITION USE



CALL 01706 229 490 TO BOOK YOUR DEMONSTRATION NOW OR VISIT WWW.STEELBEAST.CO.UK

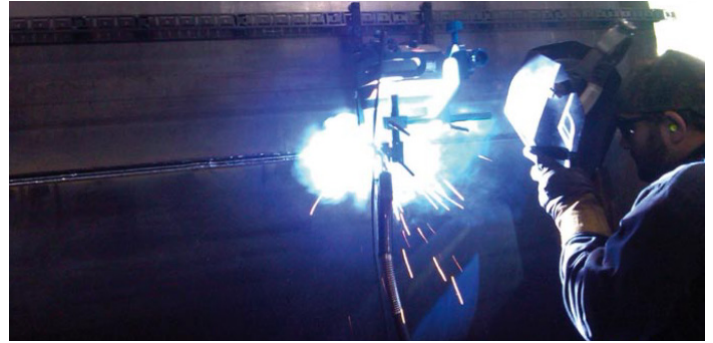
PRIMARY FEATURES AND BENEFITS

- Compact, lightweight design with durable aluminum cast housing
- Convenient Power Supply 115-230V 50/60Hz
- Positive magnetic traction permits out of position use
- Magnet on/off lever permits easy set up and adjustment on work piece
- Maintenance free 4-wheel drive with worm gear reduction
- Heat resistant silicone wheels
- Quick clamping Torch Holder mechanism for different types
 - of MIG/MAG torches with diameters of 16-22mm (5/8" - 7/8"); optionally up to 35mm (1-3/8")
- Precise torch adjustment with screw drive cross slide
- Multifunctional LED display - presetting of travel speed, units (US, EUR), error codes information
- Closed loop speed control system stabilizes travel speed to reduce weld defects and costly rework
- Consistent heat input reduces distortion
- Reduced wasted filler metal – eliminates over welding
- Automatic ARC ON/OFF system initiates welding with travel, simultaneously
- Capable of carrying and controlling 2 torches
- Self-guiding roller arms eliminate the need for track
- Multi-surface guiding
- Improves working environment - removes operator from heat and fumes

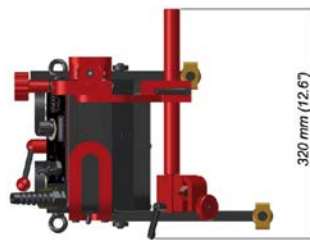
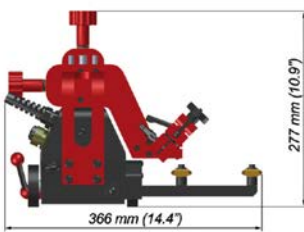


CALL **01706 229 490** TO BOOK YOUR DEMONSTRATION NOW OR VISIT WWW.STEELBEAST.CO.UK

PRIMARY FEATURES AND BENEFITS



- 1. Drive unit with control panel
- 2. Magnetic adhesion release lever
- 3. Weld contact / Arc ignition socket
- 4. Power supply coupling
- 5. Adjustable guide arm
- 6. Quick clamp torch holder
- 7. Main power switch (0/I)
- 8. Cross slide assembly



CALL **01706 229 490** TO BOOK YOUR DEMONSTRATION NOW OR VISIT WWW.STEELBEAST.CO.UK

TECHNICAL SPECIFICATIONS	GECKO
Voltage	~ 115–230 V, 50–60 Hz
Power	20 W
Welding positions	
horizontal	PA (flat), PB (horizontal vertical), PC (horizontal)
vertical	PF (vertical up and down)
Minimum path convex radius	1000 mm (3.5 ft)
Minimum path concave radius	1250 mm (4 ft)
Torch diameter	16–22 mm (0.63–0.87"); up to 35mm (1.38") option
Minimum welding material thickness	4 mm (0.16")
Ground clearance	4 mm (0.16")
Horizontal pulling force	150 N
Vertical pulling force	100 N
Cross slide adjustment range	0–35 mm (0–1.38"), up down, L-R
Horizontal speed	0–110 cm/min; (0–43.3 in/min)
Vertical speed	0–100 cm/min; (0–39.4 in/min)
Weight	8 kg (18 lbs)

TECHNICAL SPECIFICATIONS	GECKO HS
Voltage	~ 115–230 V, 50–60 Hz
Power	20 W
Welding positions	
horizontal	PA (flat), PB (horizontal vertical), PC (horizontal)
vertical	dedicated to horizontal work
Minimum path convex radius	1000 mm (3.5 ft)
Minimum path concave radius	1250 mm (4 ft)
Torch diameter	16–22 mm (0.63–0.87"); up to 35mm (1.38") option
Minimum welding material thickness	4 mm (0.16")
Ground clearance	4 mm (0.16")
Horizontal pulling force	150 N
Vertical pulling force	dedicated to horizontal work
Cross slide adjustment range	0–35 mm (0–1.38"), up down, L-R
Horizontal speed	5–220 cm/min; (1.5–86.6 in/min)
Vertical speed	dedicated to horizontal work
Weight	8 kg (18 lbs)

CALL **01706 229 490** TO BOOK YOUR DEMONSTRATION NOW OR VISIT WWW.STEELBEAST.CO.UK



PRW-0466-06-00-00-0
Guide arm assembly with brass roller wheel



Power cord
3m (9,7 ft)



KBL-0466-17-00-00-0
Dual arc ignition cable
of 6.5 m (21 ft)



UCW-0466-04-00-00-0
Torch Holder Long
Rod Clamp Assembly

OPTIONAL ACCESSORIES FOR MULTI-SURFACE GUIDING AND VARIETY OF APPLICATIONS



PRW-0466-41-00-00-0
Edge Following Guide Arms



PRW-0466-42-00-00-0
Adjustable Guide Arms



PRW-0466-50-01-01-0
Flexible track 185cm (6ft) 1pc



PRW-0466-50-02-00-0
Track following Guide Arms



BLO-0466-50-01-10-0
Magnet block 1 pc



ZRZ-0466-19-00-00-0
Torch clamp 22-35 mm



WLK-0476-20-01-00-0
Short Rod Clamp



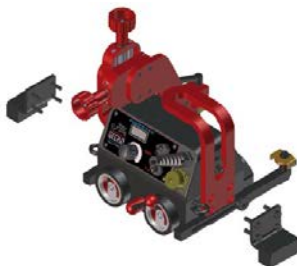
PRD-0466-43-00-00-0
Torch Extension Arm



PRW-0466-52-00-00-0
Magnet guide arms



PDT-0466-40-00-00-0
Dual Torch Mount



BL00466-44-01-00-0
Magnet blocks (front)
M5x25



BLO-0466-45-01-00-0
Magnet blocks (back)
M6x25

CALL 01706 229 490 TO BOOK YOUR DEMONSTRATION NOW OR VISIT WWW.STEELBEAST.CO.UK